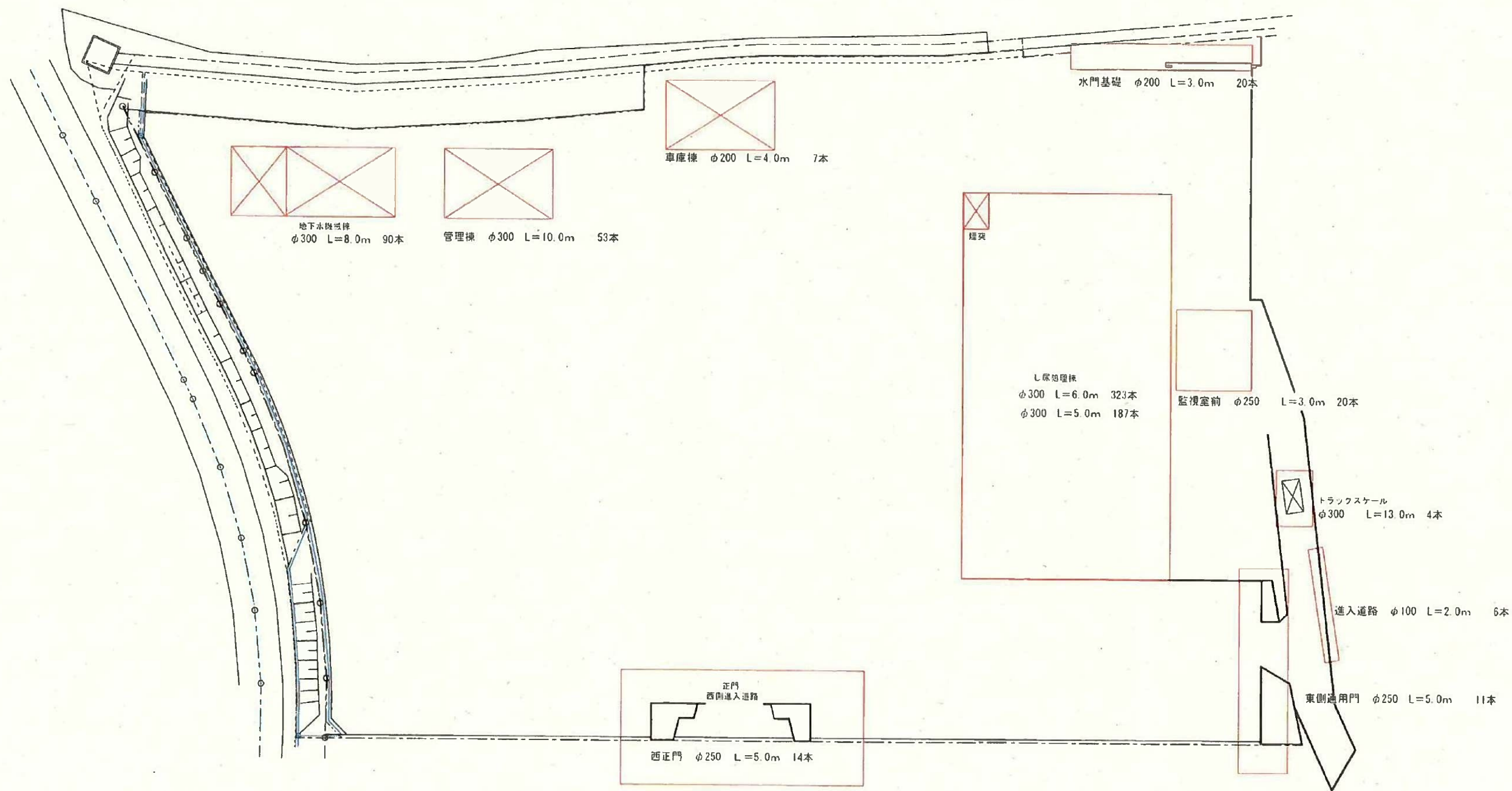


撤去杭 調査票				
場所	杭種	杭 長	施工本数	残置杭本数
管理棟	PC φ 300	L=10.0m	53	12
地下水機械棟	PC φ 300	L=8.0m	90	0
し尿処理場棟	PC φ 300	L=6.0m	323	109
し尿処理場棟	PC φ 300	L=5.0m	187	62
監視室前	RC φ 250	L=3.0m	20	0
トラックスケール	RC φ 300	L=13.0m	4	0
進入道路	RC φ 100	L=2.0m	6	0
水門基礎部	RC φ 200	L=3.0m	20	0
東側通用門	RC φ 250	L=5.0m	11	1
西側正門	RC φ 250	L=5.0m	14	9
車庫棟	RC φ 200	L=4.0m	7	0
		合計	735	193

煙突基礎 殘置杭 ($\phi 300$ L=5.0m) 座標一覽[illegible]



				日進美化センター解体/撤去工事		2024.0114
				撤去杭調査（杭径、杭長、設計本数）		A3 1/200

し尿処理棟 残置杭 座標一覧表

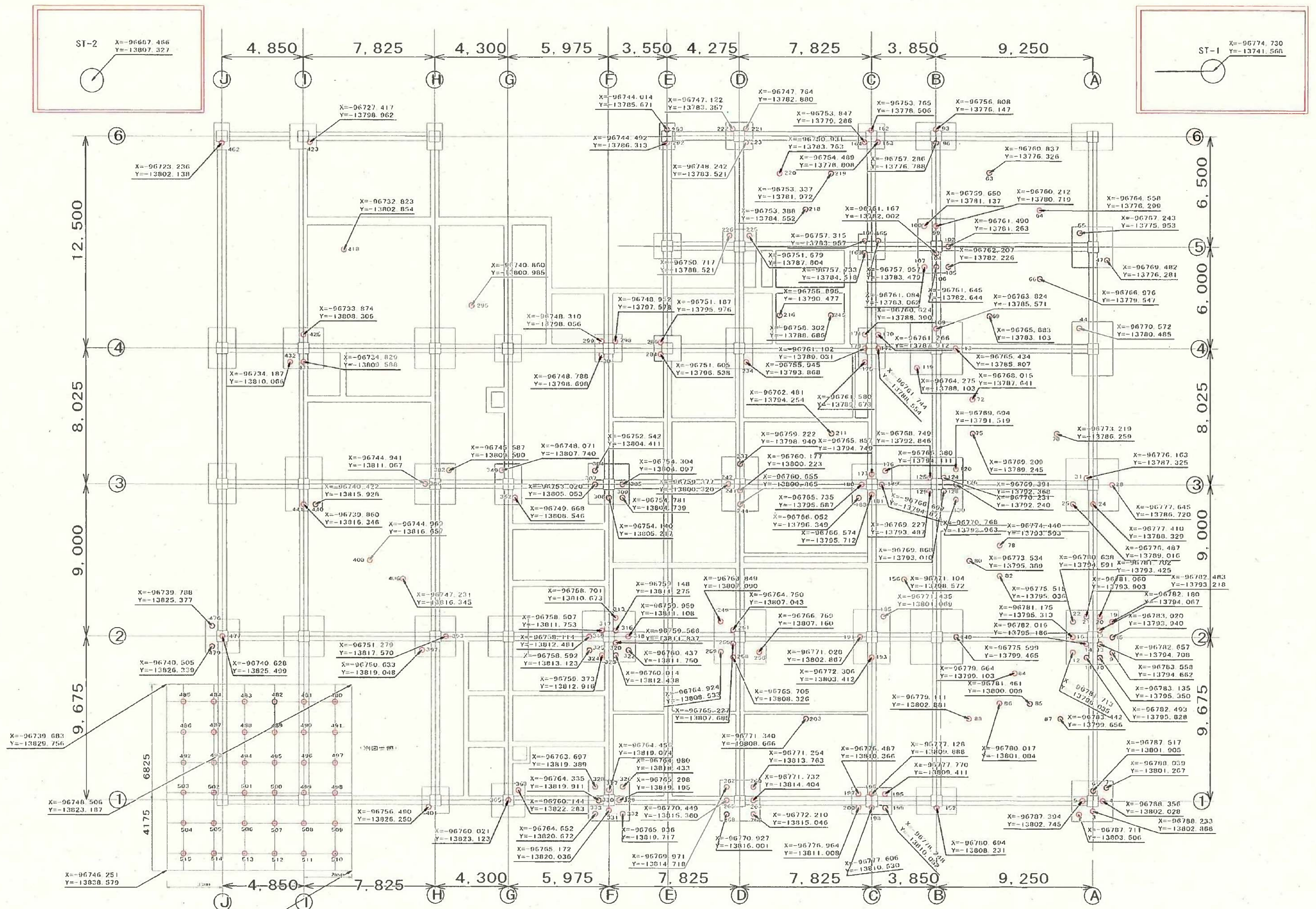
座標 測量基準点 ST-1X=-96774.730 Y=-13741.568 H=27.873 No.1

残本数	残杭番号	X軸	Y軸	杭先端深さ (m)	杭抜長さ(m)	残置杭先端深さ (m)	残置杭長さ (m)	杭先端深さ (m)
1	423	-96727.417	-13798.962	16.60	2.90	13.70	3.10	10.60
2	462	-96723.236	-13802.138	16.60	3.70	12.90	2.30	10.60
3	295	-96740.860	-13800.985	17.30	4.90	12.40	1.10	11.30
4	418	-96732.823	-13802.854	17.30	5.25	12.05	0.75	11.30
5	479	-96740.505	-13826.339	16.60	2.00	14.60	4.00	10.60
6	476	-96739.788	-13825.377	16.60	2.50	14.00	3.50	10.60
7	477	-96740.628	-13825.499	16.60	2.00	14.60	4.00	10.60
8	408	-96744.969	-13816.657	17.20	4.20	13.00	1.80	11.20
9	406	-96747.231	-13816.345	17.20	3.30	13.90	2.70	11.20
10	431	-96734.829	-13809.588	16.60	3.40	13.20	2.60	10.60
11	425	-96733.874	-13808.305	17.20	4.90	12.30	1.10	11.20
12	432	-96734.187	-13810.066	16.60	3.60	13.00	2.40	10.60
13	440	-96740.422	-13815.928	16.60	4.50	12.10	1.50	10.60
14	441	-96739.860	-13816.346	16.60	2.80	13.80	3.20	10.60
15	386	-96744.941	-13811.067	16.60	4.00	12.60	2.00	10.60
16	382	-96745.587	-13809.590	16.60	4.60	12.00	1.40	10.60
17	393	-96751.279	-13817.570	16.60	4.87	11.73	1.13	10.60
18	397	-96750.633	-13819.048	16.60	3.25	13.35	2.75	10.60
19	401	-96756.490	-13826.250	16.60	1.65	14.95	4.35	10.60
20	349	-96748.071	-13807.740	16.60	5.05	11.55	0.95	10.60
21	352	-96749.668	-13808.546	16.60	3.72	12.88	2.28	10.60
22	363	-96760.144	-13822.283	16.60	4.10	12.50	1.90	10.60
23	365	-96760.021	-13823.123	16.60	4.20	12.40	1.80	10.60
24	222	-96747.122	-13783.357	16.60	4.60	12.00	1.40	10.60
25	223	-96748.242	-13783.521	16.60	3.10	13.50	2.90	10.60
26	221	-96747.764	-13782.880	16.60	1.00	15.60	5.00	10.60
27	292	-96744.492	-13785.313	16.60	1.70	14.90	4.30	10.60
28	293	-96744.014	-13785.671	16.60	1.00	15.60	5.00	10.60
29	220	-96750.931	-13783.763	16.60	4.20	12.40	1.80	10.60
30	218	-96753.388	-13784.552	16.60	2.50	14.00	3.40	10.60
31	219	-96753.337	-13781.972	16.60	4.30	12.30	1.70	10.60
32	164	-96753.847	-13779.286	17.20	3.90	13.30	2.10	11.20
33	162	-96753.765	-13778.506	17.20	2.50	14.70	3.50	11.20
34	163	-96754.489	-13778.808	17.20	2.20	15.00	3.80	11.20
35	225	-96751.679	-13787.804	16.60	1.66	14.94	4.34	10.60
36	226	-96750.717	-13788.521	16.60	1.80	14.80	4.20	10.60
37	169	-96757.733	-13784.518	17.20	2.20	15.00	3.80	11.20
38	166	-96757.315	-13783.957	17.20	2.40	14.80	3.60	11.20
39	165	-96757.957	-13783.479	17.20	1.60	15.60	4.40	11.20
40	107	-96761.084	-13783.062	17.20	4.60	13.20	1.00	12.20
41	100	-96759.650	-13781.137	17.20	3.50	13.70	1.50	12.20
42	104	-96761.167	-13782.002	17.20	2.60	14.60	2.40	12.20
43	99	-96760.212	-13780.719	17.20	1.30	15.90	3.70	12.20
44	105	-96762.207	-13782.226	17.20	3.80	13.40	1.20	12.20
45	106	-96761.645	-13782.644	17.20	2.10	15.10	2.90	12.20
46	102	-96761.490	-13781.263	17.20	2.70	14.50	2.30	12.20
47	64	-96764.558	-13776.299	17.20	3.10	14.10	1.90	12.20
48	63	-96760.837	-13776.326	17.20	3.60	13.60	1.40	12.20
49	69	-96765.883	-13783.103	17.20	3.20	14.00	1.80	12.20
50	72	-96768.015	-13787.641	17.20	2.40	14.80	2.60	12.20
51	73	-96773.219	-13786.259	17.20	3.00	14.20	2.00	12.20
52	75	-96769.209	-13789.245	17.20	3.00	14.20	2.00	12.20
53	66	-96766.976	-13779.547	17.20	4.60	12.60	0.40	12.20
54	78	-96774.440	-13793.593	17.20	3.50	13.70	1.50	12.20
55	82	-96775.515	-13795.036	17.20	4.20	13.00	0.80	12.20

L 尿処理棟

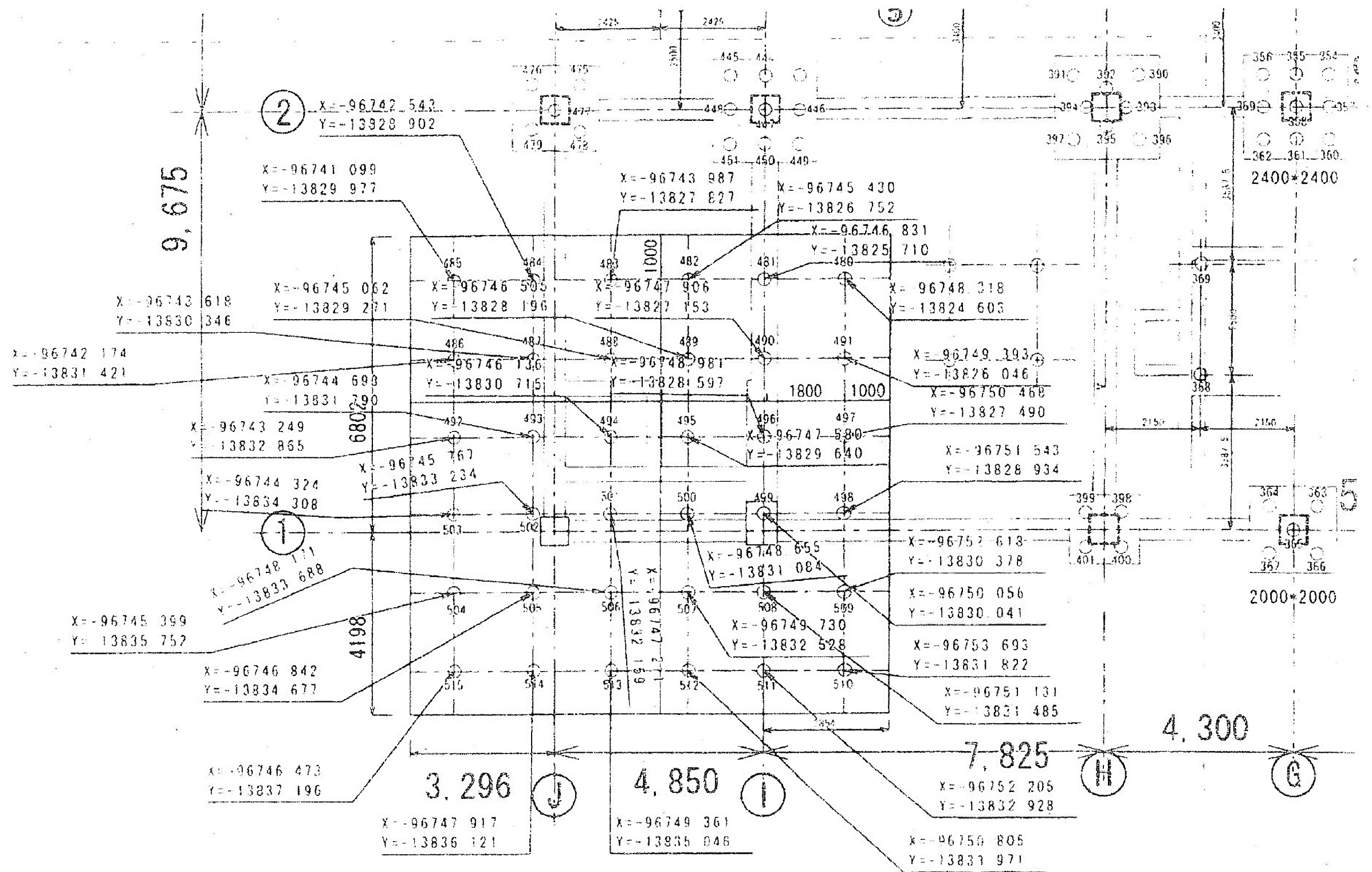
No. 3

114	333	-96764.652	-13820.672	16.60	2.40	14.20	3.60	11.20
115	191	-96771.028	-13802.867	16.60	3.50	13.10	2.50	11.20
116	185	-96771.435	-13801.069	16.60	2.40	14.20	3.60	11.20
117	193	-96772.306	-13803.412	16.60	2.00	14.60	4.00	11.20
118	28	-96777.645	-13786.720	17.20	2.80	14.40	2.20	12.20
119	31	-96776.163	-13787.325	17.20	2.30	14.90	2.70	12.20
120	25	-96776.487	-13789.016	17.20	2.40	14.80	2.60	12.20
121	24	-96777.410	-13788.329	17.20	2.90	14.30	2.10	12.20
122	323	-96760.014	-13812.438	16.60	2.90	13.70	3.10	11.20
123	324	-96759.373	-13812.916	16.60	3.10	13.50	2.90	11.20
124	325	-96758.592	-13813.123	16.60	3.40	13.20	2.60	11.20
125	322	-96760.437	-13811.750	16.60	2.70	13.90	3.30	11.20
126	318	-96759.959	-13811.108	16.60	2.70	13.90	3.30	11.20
127	320	-96759.566	-13811.837	16.60	2.70	13.90	3.30	11.20
128	313	-96758.701	-13810.673	16.60	3.20	13.40	2.80	11.20
129	316	-96759.148	-13811.275	16.60	4.70	11.90	1.30	11.20
130	317	-96758.507	-13811.753	16.60	5.20	11.40	0.80	11.20
131	319	-96758.114	-13812.481	16.60	3.70	12.90	2.30	11.20
132	256	-96766.769	-13807.160	16.60	5.70	10.90	0.30	11.20
133	258	-96765.705	-13808.326	16.60	2.00	14.60	4.00	11.20
134	255	-96765.227	-13807.685	16.60	5.00	11.60	1.00	11.20
135	251	-96764.750	-13807.043	16.60	2.60	14.00	3.40	11.20
136	259	-96764.924	-13808.533	16.60	2.40	14.20	3.60	11.20
137	249	-96763.849	-13807.090	16.60	3.00	13.60	3.00	11.20
138	55	-96767.243	-13775.953	17.20	2.60	14.60	2.40	12.20
139	47	-96769.482	-13776.281	17.20	3.30	13.90	1.70	12.20
140	44	-96770.572	-13780.485	17.20	1.70	15.60	3.30	12.20
141	96	-96767.286	-13776.788	17.20	3.60	13.60	1.40	12.20
142	93	-96766.808	-13776.147	17.20	3.50	13.70	1.50	12.20
143	176	-96766.380	-13794.111	16.60	2.70	13.90	3.30	11.20
144	177	-96765.857	-13794.749	16.60	4.30	12.30	1.70	11.20
145	179	-96766.697	-13794.871	16.60	3.90	12.70	2.10	11.20
146	181	-96766.574	-13795.712	16.60	3.70	12.90	2.30	11.20
147	180	-96765.735	-13795.587	16.60	3.50	13.10	2.50	11.20
148	183	-96766.062	-13796.349	16.60	3.00	13.60	3.00	11.20
149	211	-96762.481	-13794.254	16.60	4.30	12.30	1.70	11.20
150	237	-96759.222	-13798.940	16.60	3.00	13.60	3.00	11.20
151	241	-96760.177	-13800.223	16.60	3.00	13.60	3.00	11.20
152	244	-96760.655	-13800.865	16.60	3.00	13.60	3.00	11.20
153	242	-96759.377	-13800.320	16.60	3.00	13.60	3.00	11.20
154	309	-96754.781	-13804.739	16.60	4.20	12.40	1.80	11.20
155	305	-96754.304	-13804.097	16.60	4.60	12.00	1.40	11.20
156	308	-96754.140	-13805.217	16.60	2.90	13.70	3.10	11.20
157	307	-96753.020	-13805.053	16.60	4.80	11.80	1.20	11.20
158	304	-96752.542	-13804.411	16.60	4.90	11.70	1.10	11.20
159	170	-96761.266	-13787.912	16.60	1.30	15.30	4.70	11.20
160	171	-96760.624	-13788.390	16.60	3.70	12.90	2.30	11.20
161	172	-96761.744	-13788.554	16.60	1.80	14.80	4.20	11.20
162	173	-96761.102	-13789.031	16.60	3.50	13.10	2.50	11.20
163	175	-96761.580	-13789.673	16.60	2.10	14.50	3.90	11.20
164	216	-96758.302	-13788.686	16.60	3.30	13.30	2.70	11.20
165	216	-96755.896	-13790.477	16.60	4.20	12.40	1.80	11.20
166	234	-96765.945	-13793.868	16.60	3.00	13.60	3.00	11.20
167	284	-96751.605	-13796.638	16.60	3.60	12.80	2.20	11.20
168	286	-96751.187	-13795.976	16.60	1.40	15.20	4.60	11.20
169	298	-96748.952	-13797.578	16.60	1.50	15.10	4.50	11.20
170	301	-96748.788	-13798.698	16.60	3.10	13.50	2.90	11.20
171	299	-96748.310	-13798.056	16.60	4.70	11.90	1.30	11.20
	6m	109本						
	5m	52本						
		※斜数字は、 杭長 L=5.0m					439.65	←残杭長



L 尿処理棟 基礎伏せ図 残置杭座標 A3 1/200

※ PC 300φ L=6.0m 323本 ※ PC 300φ L=5.0m 187本

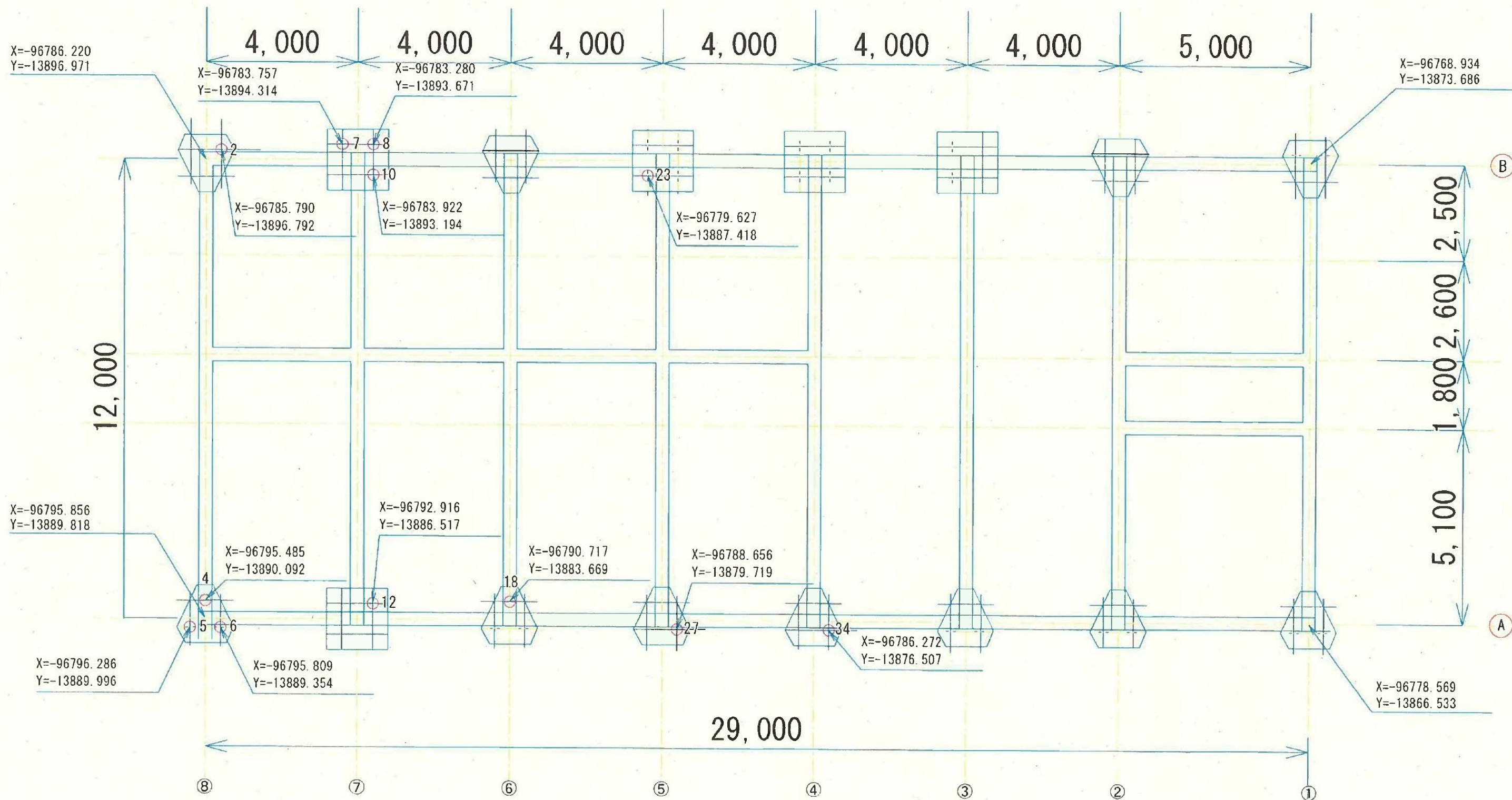


煙突 基礎

※ PC 300φ L=5.0m 36本

管理棟 残置杭 座標記入 (φ300 L=10.0M)

残本数	残杭番号	杭抜長さ (m)	杭天端深さ (m)	残置杭長さ (m)	残置杭天端深さ (m)	杭先端深さ (m)	残杭座標 X軸	残杭座標 Y軸
1	8	9.7	24.3	0.3	14.6	14.3	-96783.280	-13893.671
2	6	9.7	24.3	0.3	14.6	14.3	-96795.809	-13889.354
3	18	9.7	24.3	0.3	14.6	14.3	-96790.717	-13883.669
4	7	9.7	24.3	0.3	14.6	14.3	-96783.757	-13894.314
5	23	9.7	24.3	0.3	14.6	14.3	-96779.627	-13887.418
6	10	9.7	24.3	0.3	14.6	14.3	-96783.922	-13893.194
7	4	9.7	24.3	0.3	14.6	14.3	-96795.485	-13890.092
8	34	9.7	24.3	0.3	14.6	14.3	-96786.272	-13876.507
9	2	9.7	24.3	0.3	14.6	14.3	-96785.790	-13896.792
10	27	9.7	24.3	0.3	14.6	14.3	-96788.656	-13879.719
11	5	9.0	24.3	1.0	15.3	14.3	-96796.286	-13889.996
12	12	9.0	24.3	1.0	15.3	14.3	-96792.916	-13886.517



管理棟 基礎伏せ図及び残置杭図A3 1/200

正門・東通用門 残置杭 ($\phi 250$ L=5.0m) 座標一覧

[illegible]

※ 「先端」 ×・・・杭先端部 存置
 ▽・・・杭先端部 完全撤去

東門殘置座標

